

UNIT
6

Present of *Be*: Questions with *Where*; Prepositions of Place

PLACES IN THE NEIGHBORHOOD

OUTCOMES

- Ask and answer simple present questions with *where* and the verb *be*
- Use prepositions of place
- Complete sentences about a reading
- Answer questions about a conversation
- Ask and answer questions about the locations of people, places, and things
- Write a paragraph about three places in your area

STEP 1 GRAMMAR IN CONTEXT

BEFORE YOU READ

A VOCABULARY Study the words. Then work with a partner. Practice the conversation.



a supermarket



a gym



a bank



a drugstore



a hospital



a gas station

Conversation

A: Where is the closest supermarket?

B: It's on West Street.

A: And where's the closest bank?

B: It's on Second Avenue.

B Talk about places in your neighborhood. Use the words in A and streets in your area.

A: Where is the closest _____?

B: It's on _____.



Read this article about places in a small town.



Welcome to Preston Apartments. Do you know the area? **Where** is the closest supermarket? **Where's** the post office? Here is some useful information.

Goodfood Supermarket is **on** Main Street **between** First and Second Streets. It's open 24 hours a day. The food is fresh,¹ and the prices are good. Preston Post Office is **on** Main Street **between** First and Second Streets, too. It's **next to** the supermarket. The post office is open Monday to Friday from 9 a.m. to 5 p.m. and Saturday until 12 p.m.

Ella's Gym is **on** Main Street between Second and Third Streets. It's **at** 45 Main Street. It's **next to** Drew's Drugstore. The gym is open every day from 7 a.m. to 10 p.m., and the drugstore is open Monday to Saturday from 9 to 7.

DSL Bank is **between** Second and Maple Streets. It's open Monday to Friday from 9 a.m. to 4 p.m., and Saturdays from 9 to 12.

Preston Hospital is **on** the corner of Washington Street and Second Avenue. It's **across from** a gas station.

Enjoy your new home!

Olivia Rodriguez, Manager, Preston Apartments
mr35@qmail.com • 988-656-4346

¹ *fresh*: good because it's not old

AFTER YOU READ

A COMPREHENSION Look at the reading again. Match the beginnings with the endings of the sentences.

- | | |
|----------------------------|---|
| ___ 1. The supermarket is | a. the manager of Preston Apartments. |
| ___ 2. The post office is | b. next to the gym. |
| ___ 3. The gym is | c. on Main Street between Second and Third Streets. |
| ___ 4. The drugstore is | d. next to the post office. |
| ___ 5. Olivia Rodriguez is | e. open on Saturday until noon. |

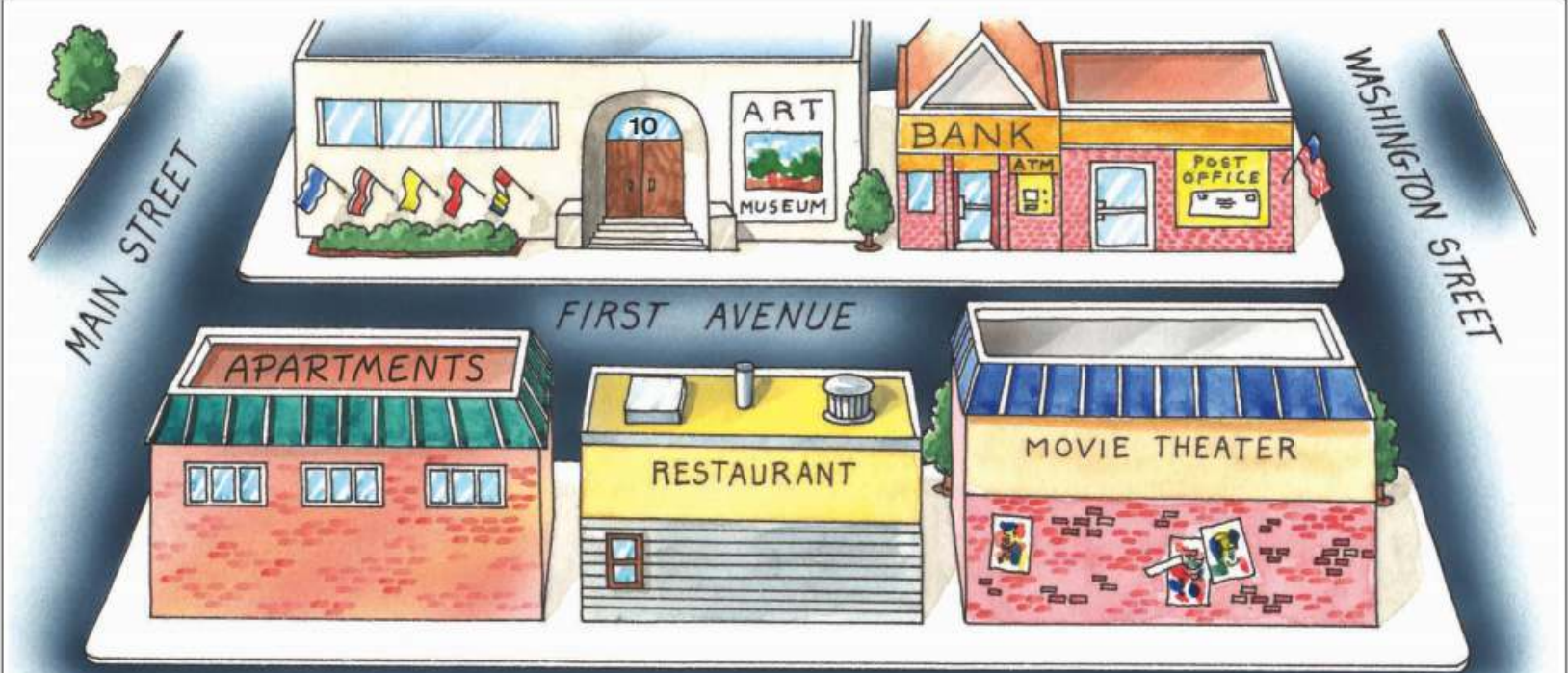
B Work with a partner. Compare your answers in A. Then say something about a supermarket, a gym, or a hospital near you.

STEP 2 GRAMMAR PRESENTATION

PRESENT OF BE: QUESTIONS WITH WHERE

Questions with <i>Where</i>	Short Answers	Long Answers
Where is the supermarket?	On First Avenue.	It's on First Avenue.
Where are your friends?	In Florida.	They're in Florida.

PREPOSITIONS OF PLACE



The art museum is **on** First Avenue. It's **across from** an apartment building and a restaurant. It's **at** 10 First Avenue. It's **on the corner of** First Avenue and Main Street.

The bank is **between** the art museum and the post office. The restaurant is **next to** the movie theater.

GRAMMAR NOTES

1 Questions with *Where*

Use <i>where</i> to ask questions about location .	A: Where is the restaurant? B: It's on First Avenue.
<i>Where's</i> is the short form for <i>where is</i> .	A: Where's the bank? B: It's next to the museum.

2 Prepositions of Place

<i>In, on, at, next to, between, and across from</i> are prepositions of place. They tell the location of people, places, and things .	My school is in Seattle. The book is on the table. I'm next to the door.
---	---

3 Prepositions in Addresses

We use prepositions in **addresses**.

- **in** + country, state, province, country, or continent
- **on** + street name and floors
- **on the corner of** + streets
- **at** + street address

It is **in** Seattle.

It is **on** Main Street. It's **on** the second (2nd) floor.

My school is **on the corner of** Main and Third (3rd).

My school is **at** 15 Main Street.

USAGE NOTE We don't always say *street* or *avenue* in informal speaking or writing.

A: Where's your school?

B: It's on **Main**. **or** It's on **Main Street**.

BE CAREFUL! Use **ordinal numbers** (*first, second, third, etc.*) for streets and floors.

We live on **Eighth (8th)** Street.

NOT We live on ~~Eight~~ Street.

We're on the **first (1st)** floor.

NOT We're on the ~~one~~ floor.

BE CAREFUL! Use *the* + an ordinal number before floors.

It's on **the third (3rd)** floor.

NOT It's ~~on-third~~ floor.

REFERENCE NOTES

For a list of **ordinal numbers**, see Appendix 4 on page 366.

For **definitions of grammar terms**, see the Glossary on page 375.

Go to [MyEnglishLab](#) to watch the grammar presentation.

STEP 3 FOCUSED PRACTICE

EXERCISE 1 DISCOVER THE GRAMMAR

A **GRAMMAR NOTES 2-3** Underline the prepositions of place in the sentences.

1. It's on First Avenue between Washington and Main. It's between a movie theater and an apartment building.
2. It's on the corner of First Avenue and Washington Street. It's next to a bank.
3. It's next to a restaurant and across from a bank.

B Look at the map on page 61. Write the place that each sentence in A is about.

1. *The restaurant* _____
2. _____
3. _____

EXERCISE 2 PREPOSITIONS IN ADDRESSES

A GRAMMAR NOTES 1-3 Complete the sentences. Circle the correct answers.

Hi Judy,

Yoko's apartment is in / (on) First Avenue between / in Jackson and Main. I think it's at / on 10 First Avenue, but I'm not sure. It's across from / in a library and next / next to a gym. It's in / on the second floor, Apartment 2A.

Take the number 4 bus. It stops on the corner of / next to First and Jackson.

See you at Yoko's on Sunday afternoon!

Mark

B Look at the map. Put an X on Yoko's apartment building.



C Look at the map again. Write a question with *where* for each answer.

1. A: Where's the gym _____? B: It's on the corner of Jackson and First.
2. A: _____? B: It's on the corner of Main and First.
3. A: _____? B: It's on First Avenue next to the supermarket.